

YAESU

The radio

WIRES-X

HRI-200

**Firmware Update
Instruction Manual**

YAESU MUSEN CO., LTD.

Introduction

This application is a software tool for updating the firmware of the WIRES-X connection kit manufactured by Yaesu Musen Co., Ltd.

The applicable connection kit and the updated firmware versions are as follows.

- Connection kit: HRI-200 (connection kit main body)
- Version: 1.01
- Destination: USA , EXP

CAUTION!

Before writing, make sure you check the Model and the Destination (Type) of your connection kit.

Writing firmware of the wrong model and destination to the connection kit may cause abnormal operation or failure.

Important Notes

- All responsibility for the usage of this software lies with the customer. We cannot be held responsible in any way for any damages or losses, which may be incurred by the customer as a result of using this software.
- Copyrights and all other intellectual property rights for the software, as well as the software manual, are the property of YAESU MUSEN CO., LTD.
- Revision, modification, reverse engineering, or decompiling of this software is prohibited. Redistribution, transfer, and resale of downloaded files are also prohibited.
- Downloaded files may only be used for personal use.
- If you cannot perform the firmware upgrade yourself, please consult with one of our sales sites or service centers.

System Requirements (Operating Environment)

In order to use this program, a personal computer (PC) with one of the following Windows operating systems, and a USB data connection cable are required

Supported Operating Systems

One of the following operating system environments:

- Microsoft® Windows® 10 (32 bit / 64 bit)
- Microsoft® Windows® 8.1 (32 bit / 64 bit)
- Microsoft® Windows® 8 (32 bit / 64 bit)
- Microsoft® Windows® 7 (Service Pack 1 or later)
- Microsoft® Windows Vista™ (Service Pack 2 or later)

The above-mentioned OS and Microsoft .NET Framework 3.5 Service Pack 1 need to be installed.

CPU

The performance of the CPU must be able to satisfy the operating system requirements.

RAM (System Memory)

The capacity of the RAM (system memory) must be more than sufficient to satisfy the operating system requirements.

HDD (Hard Disk Drive)

The capacity of the HDD must be more than sufficient to satisfy the operating system requirements.

In addition to the memory space required to run the operating system, about 50 MB or more of additional memory space is required to run the program.

Necessary PC peripheral interfaces

USB interface (USB Port)

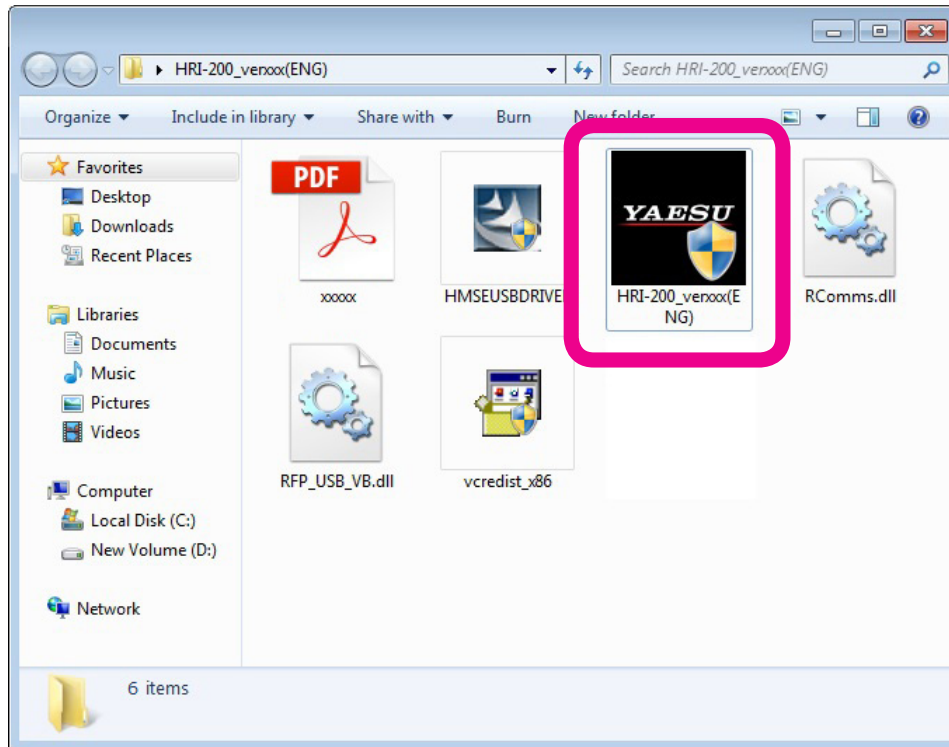
Cables

USB cable for connecting the personal computer (PC) to the HRI-200.

Install / Uninstall Procedure

Installation procedure

1. Download and unzip (extract) the update program.
2. When decompressed, the folder will automatically open. Click on the Yaesu icon in the folder to execute the update program.



Uninstall procedure

Delete the folder opened by the update program.

If the USB driver is installed, delete the following two files by un-installing the programs inside the Windows control panel.

For 32 bit OS

Renesas USB Development Tools Driver

Windows Driver Package - Renesas Electronics Corporation (HmseUsb) Renesas USB (11/27/2003 1.1.8.0)

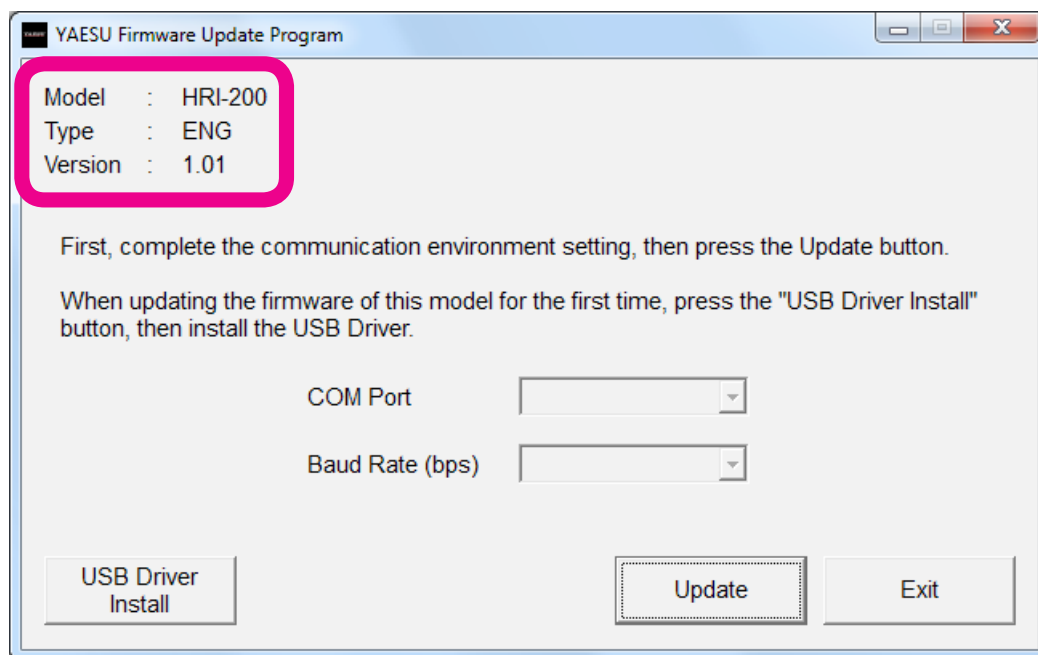
For 64 bit OS

Renesas USB Development Tools Driver

Windows Drive Package - Renesas Electronics Corporation (HmseUsb) Renesas USB (07/01/2010 1.1.9.0)

Using the Programmer

Start-up Screen



(a) Check the Model and the Destination (Type)

Upon running the update program, be sure to check the **MODEL** and **TYPE** of the user's connection kit when the above screen appears,

(b) Installing the USB driver

When updating the firmware of this model for the first time, the USB driver needs to be installed.

Click the "USB Driver Install" button to run the installation.

(The driver does not need to be installed when updating the firmware for the second or subsequent insulations).

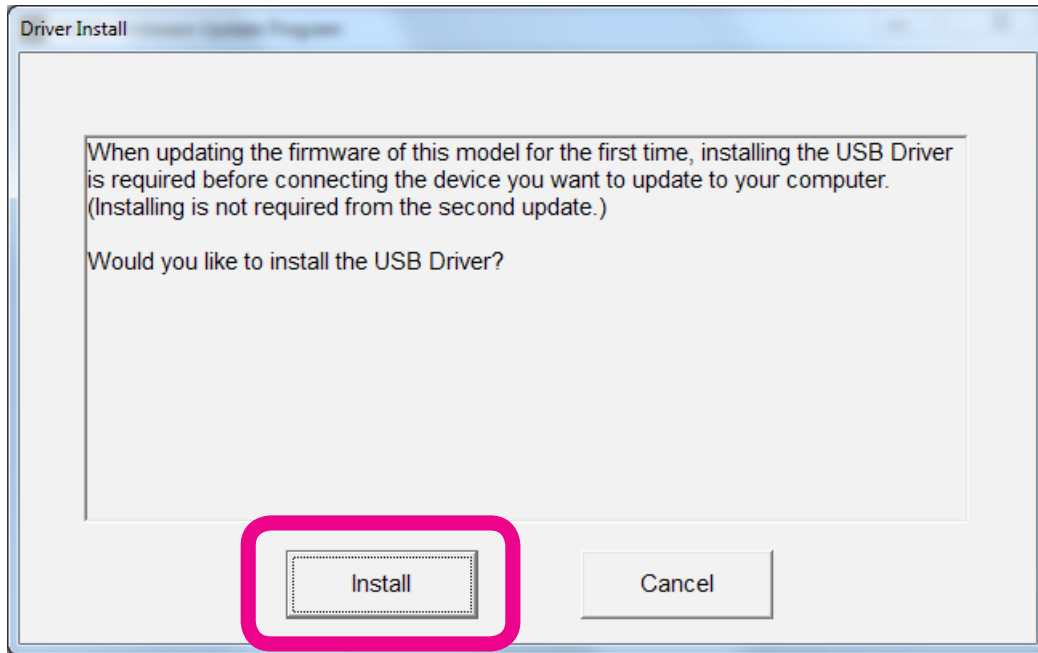
Commence Update

When the model and destination checks in (a) above have been made, and the USB driver has been installed, click the "Update button" to advance to the next screen and prepare the HRI-200 for the firmware update installation.

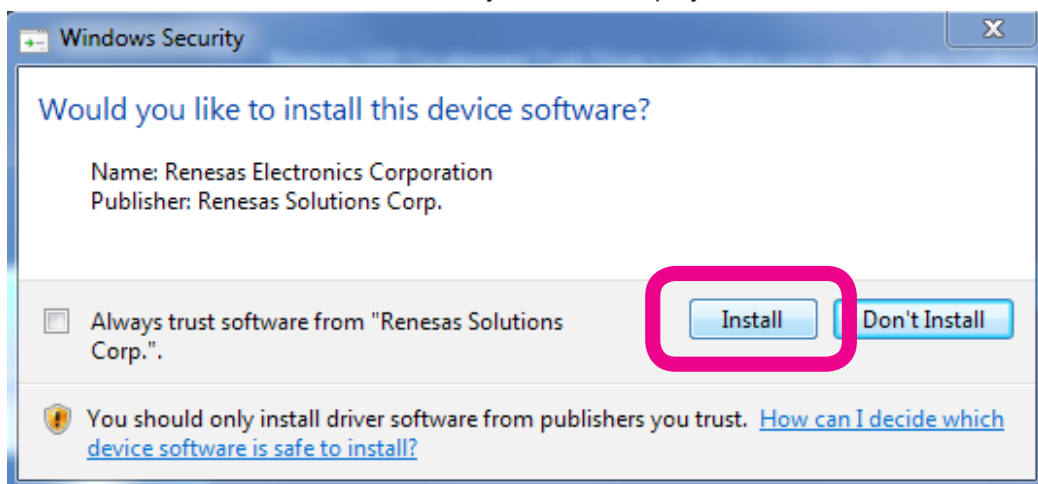
Pressing the "EXIT" button will end the update program.

Installation of USB driver 1

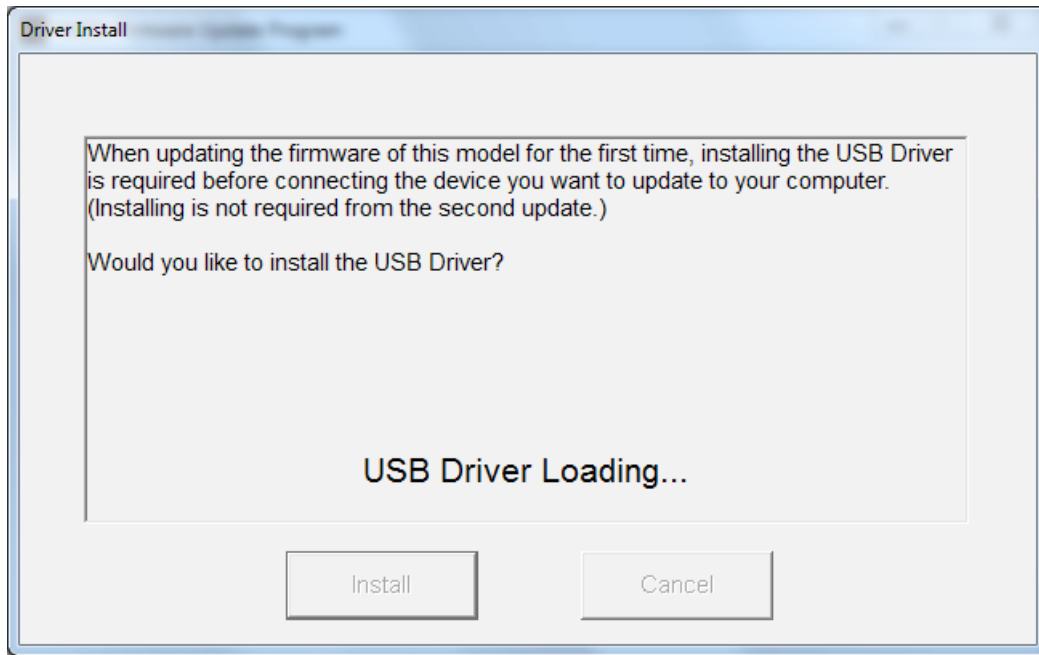
Click the “Install” button when the below screen appears.



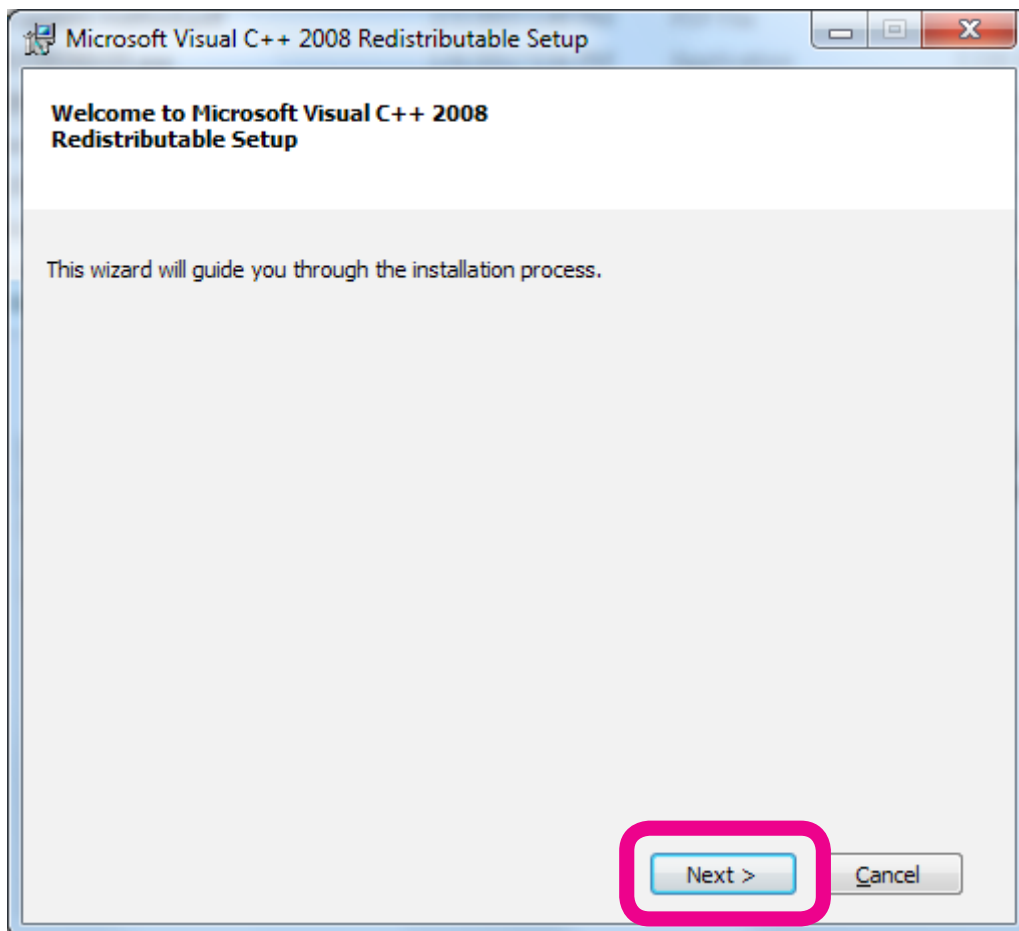
Click the “Install” button when the Windows Security screen is displayed.



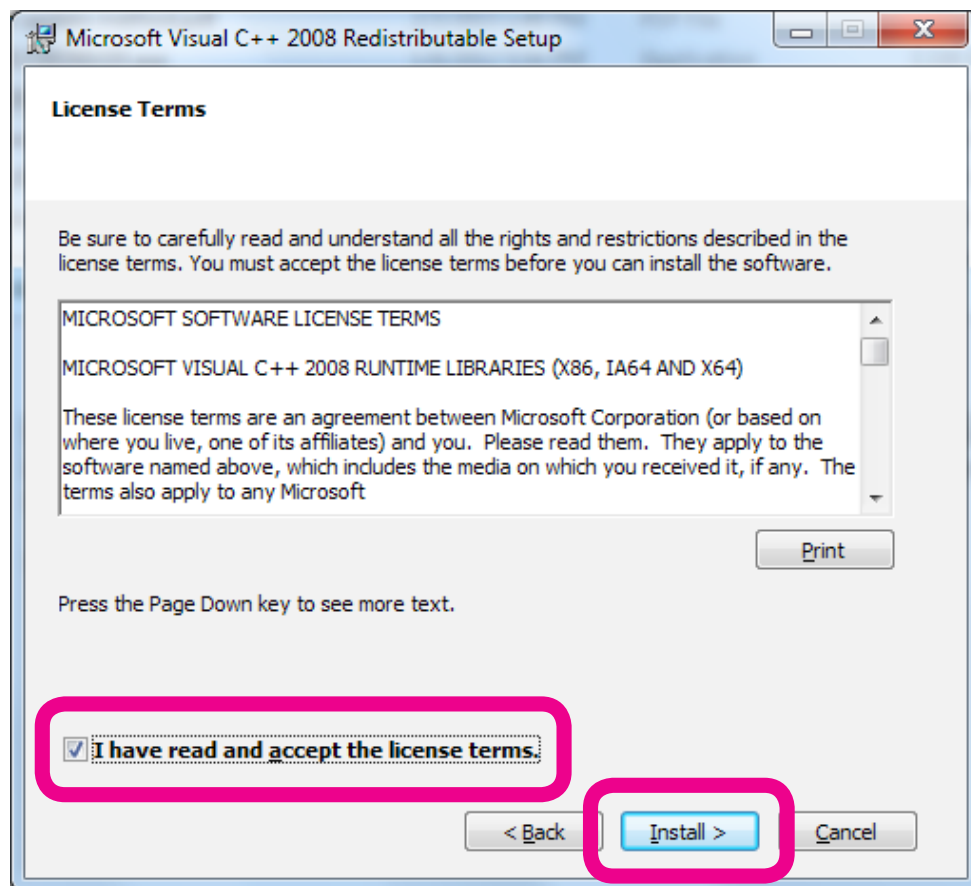
Wait for the installation to complete when “USB Driver Loading...” is displayed



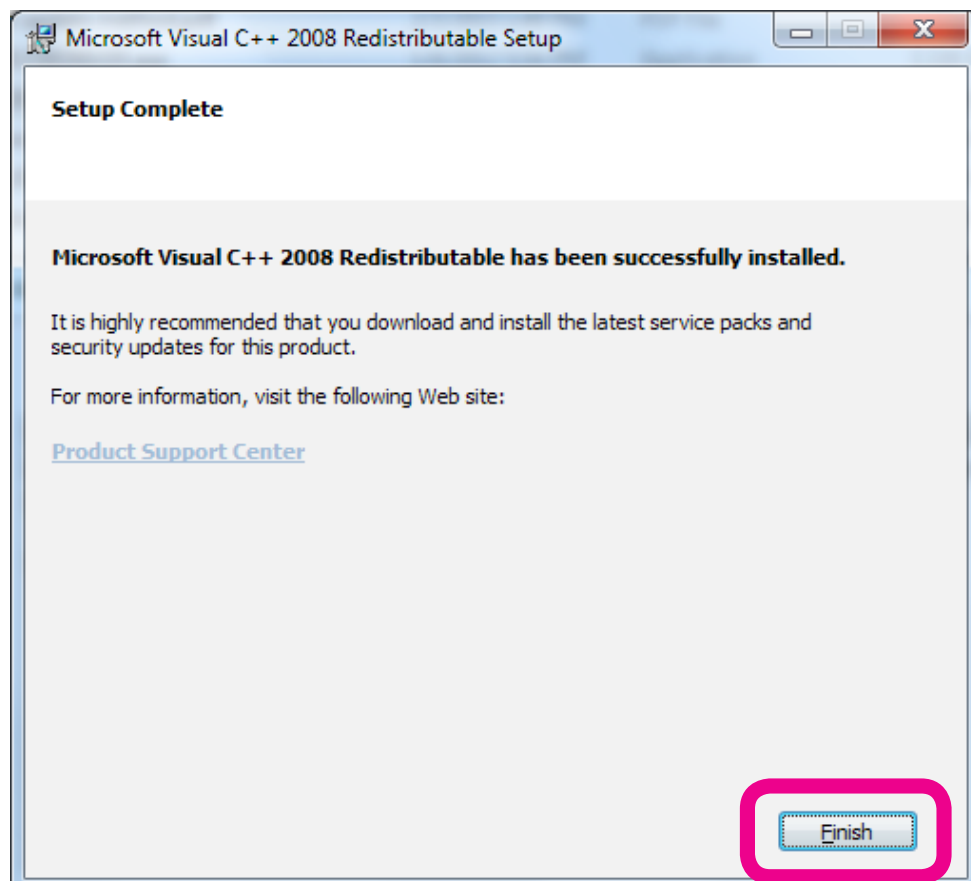
When the installation of the USB driver ends, the Microsoft Visual C++ 2008 Redistributable setup screen is displayed. Click “Next” to continue the installation.



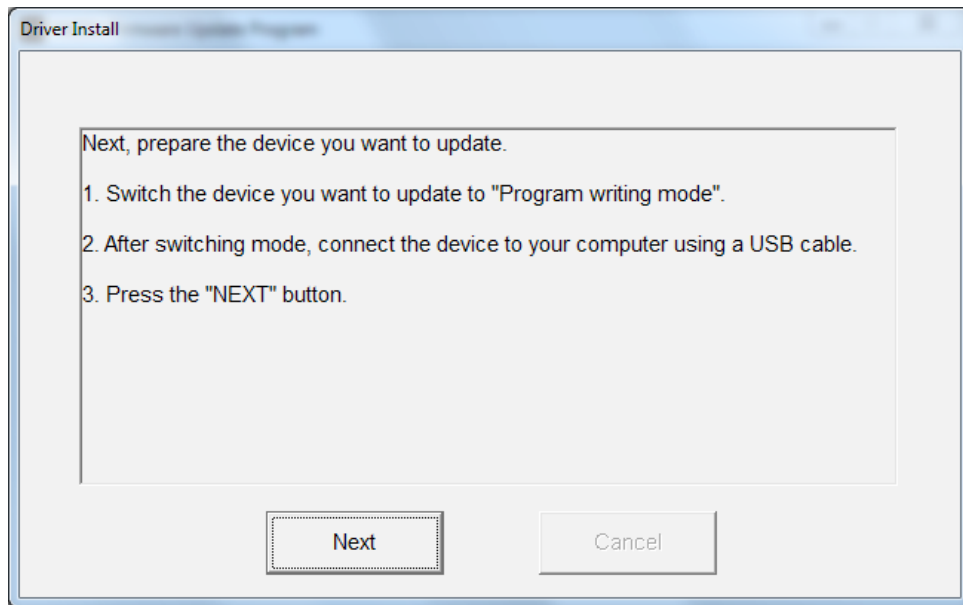
Read the details of the licensing terms that are displayed, and check “I have read and accept the license terms.” Then click the “Install” button.



When the message “Setup Complete” is displayed, click the “Finish” button.



When the driver setup is completed, the screen shown below describing the procedures to prepare the PC to recognize the connection kit appears. Carry out the respective tasks as described in the following illustrations, and then click next to "Advance to the Next Screen (Installation of USB Driver 2)" for details.



Installation of USB driver 2

Switching to the program writing mode

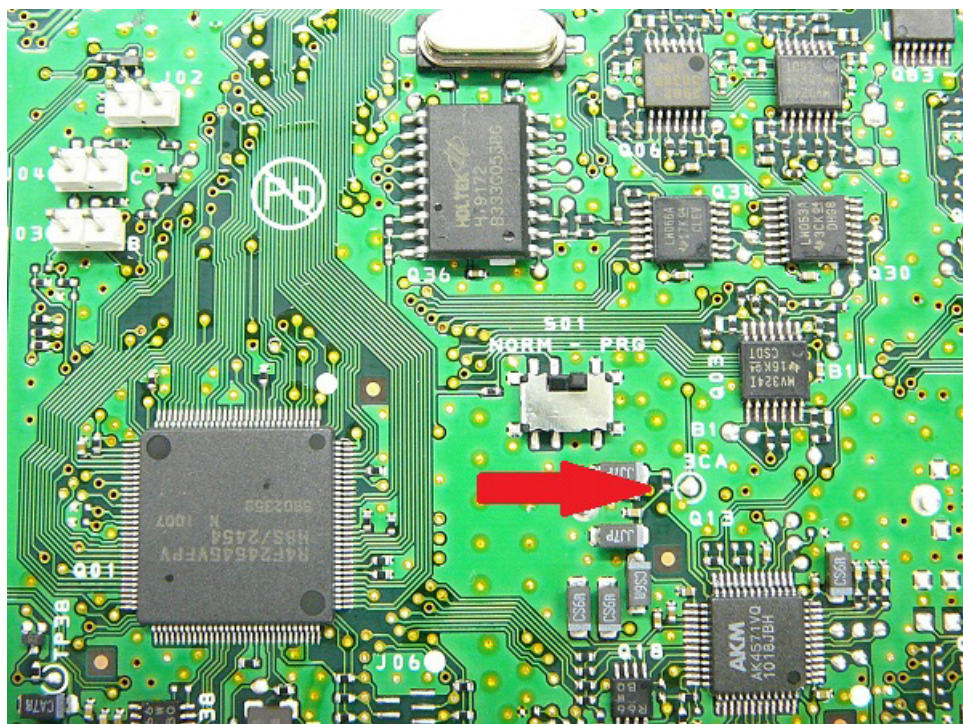
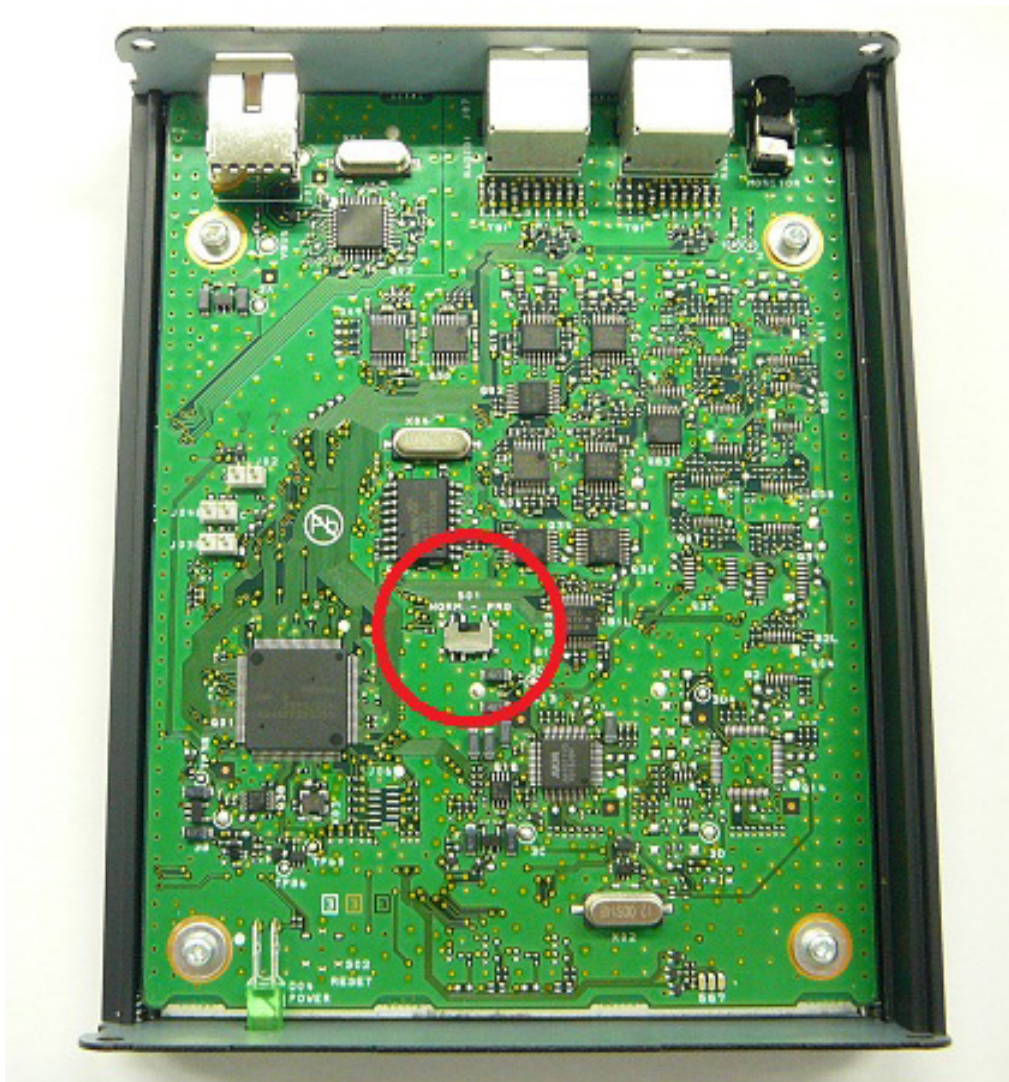
Remove the two screws enclosed by the circles at the front of the main body



Remove the two screws enclosed by the circles at the back of the main body. Slightly loosen the two screws indicated by the arrows and remove the top case.



Move the switch to the PRG position (right side) to change to the program-writing mode.



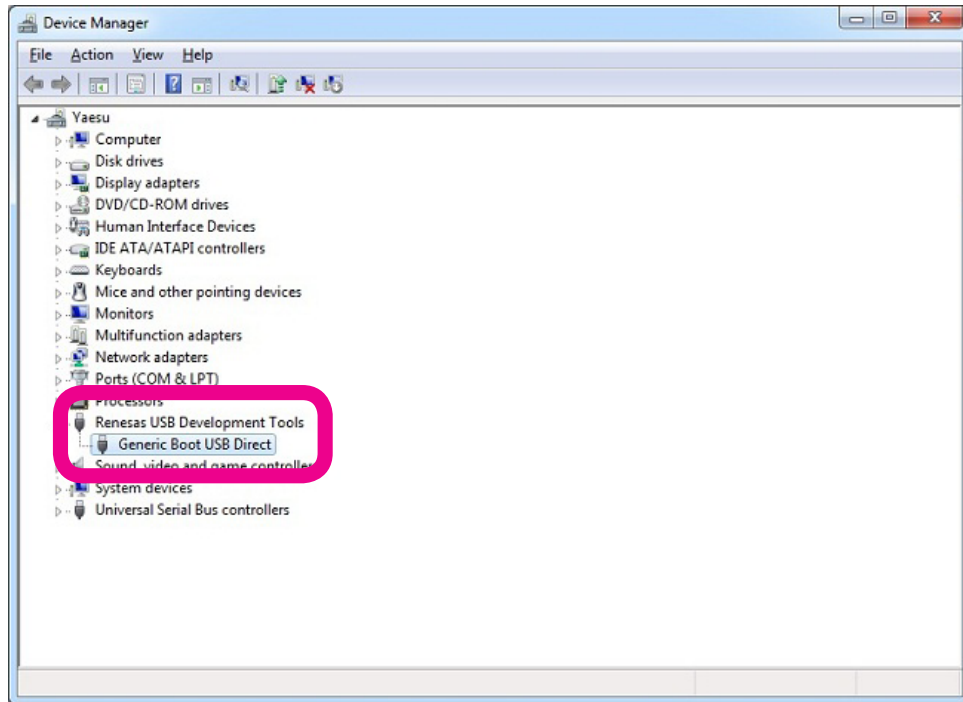
Connect the USB terminal at the back of the main body and the USB terminal on the PC with the included USB cable.



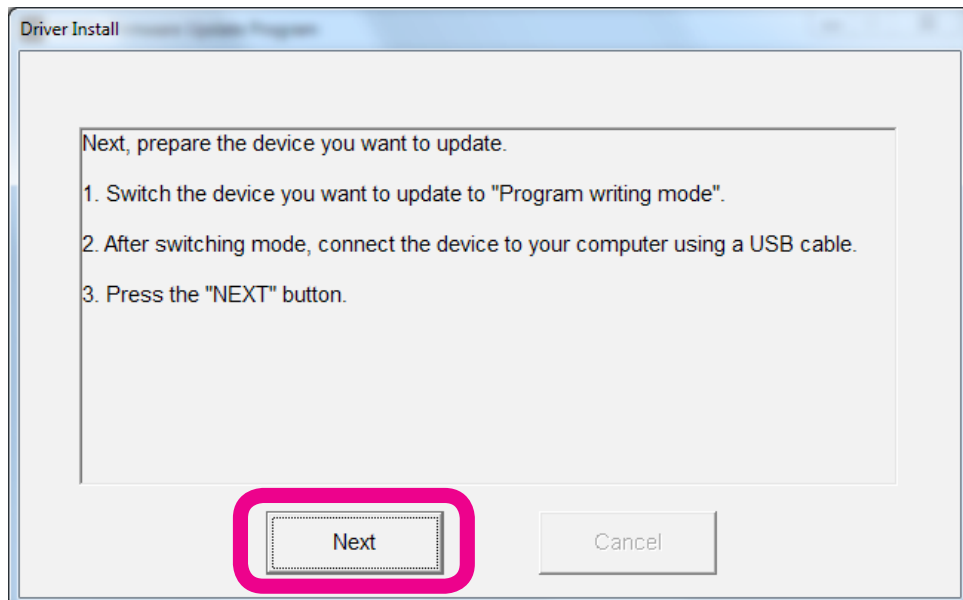
Checking the USB driver

Open the Windows device manager on the PC.

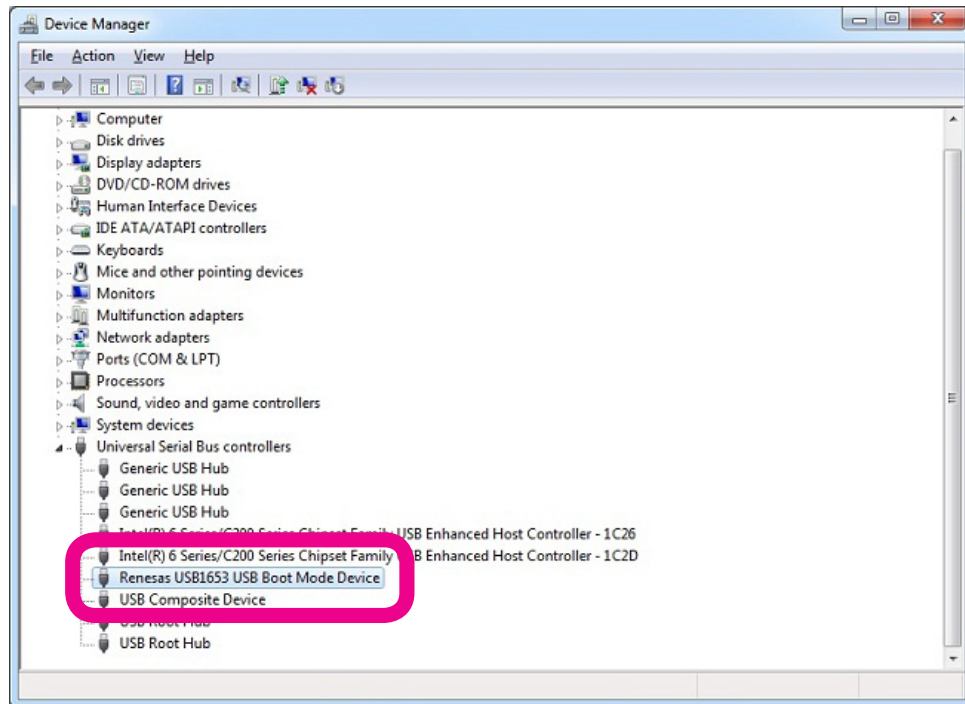
If the USB driver is installed correctly, it will be listed as shown by the highlight selection in the enclosed square under (Generic Boot USB Direct in the Renesas USB Development Tools).



Click the “Next” button to proceed to update the program.



Refer to next page “Driver update method” to update the driver as the PC will recognize the driver incorrectly when the “Renesas USB1653 USB Boot Mode Device” in the Universal Serial Bus controllers is installed as shown in the Device Manager below.

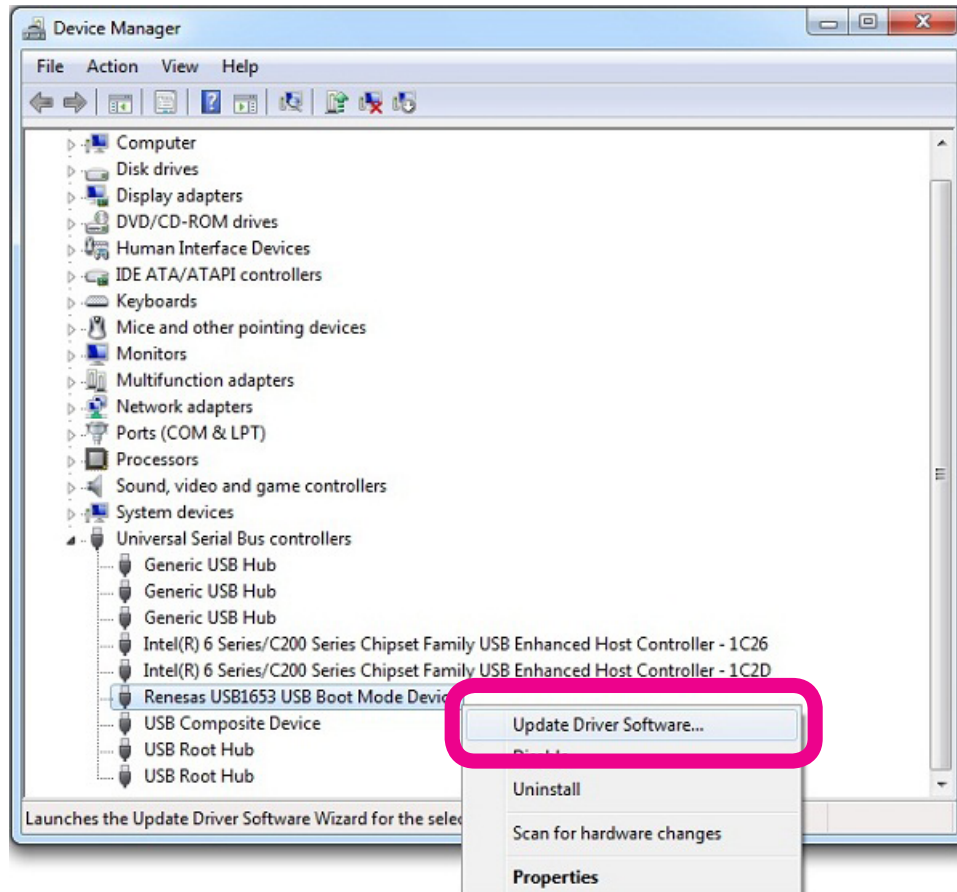


Driver update method

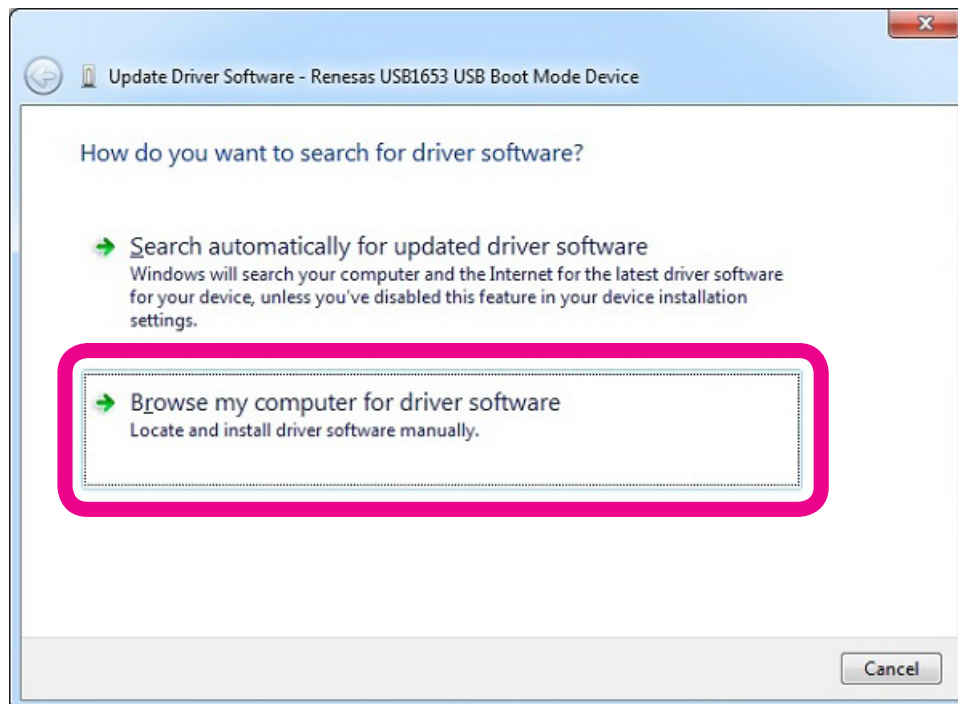
Check that the program switch of the HRI-200 main body is move to the PRG position (program writing mode), and connect the HRI-200 and PC with the enclosed USB cable.

Note: The driver will not be displayed in the device manager if the HRI-200 and PC are not connected by the enclosed USB cable.

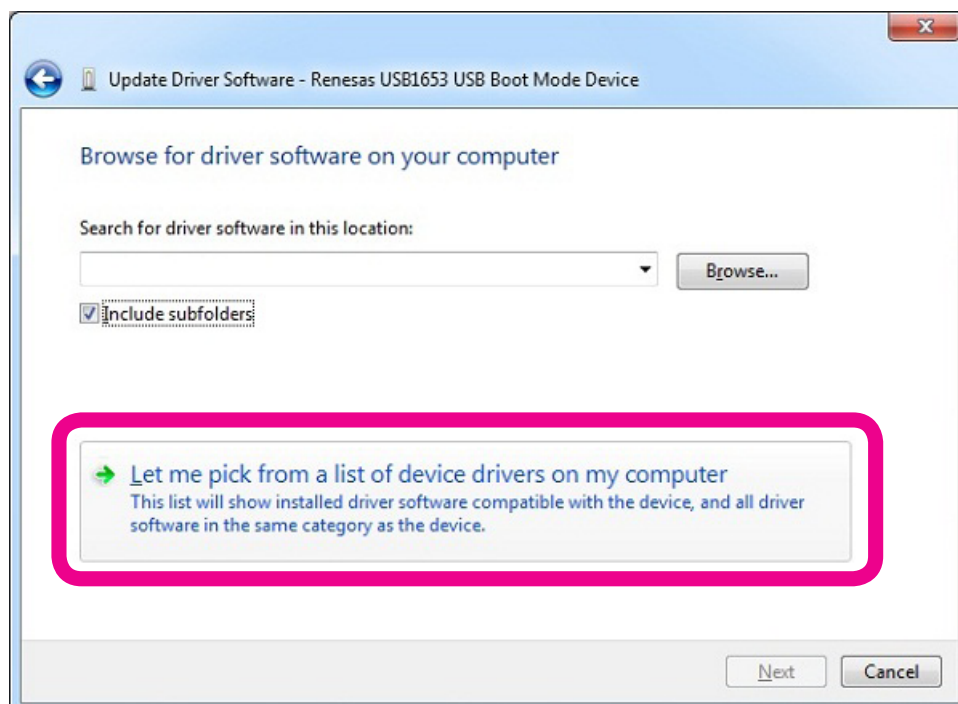
Open the device manager of the PC, select the “Renesas USB1653 USB Boot Mode Device” in the Universal Serial Bus controllers, and right-click the mouse to display the above. Then click “Update Driver Software”.



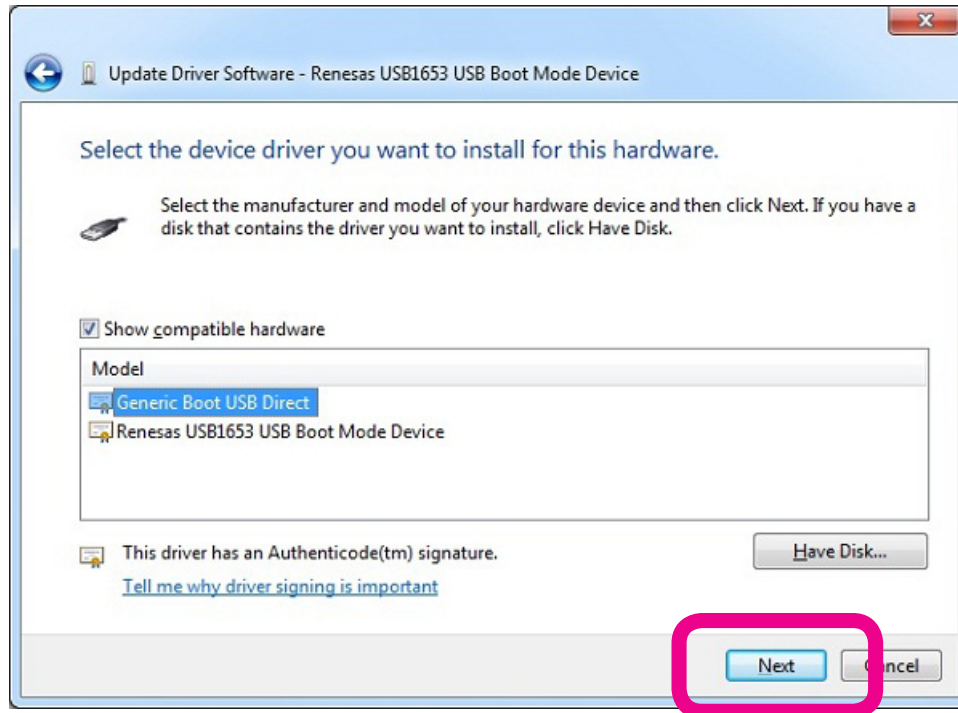
Click "Browse my computer for driver software".



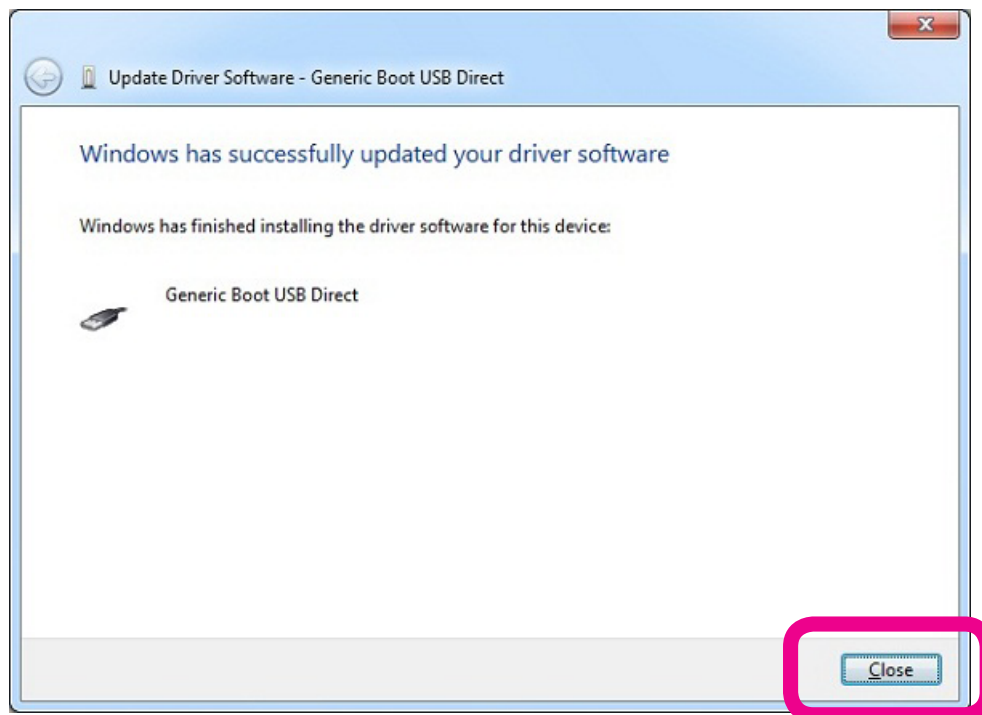
Click "Let me pick from a list of device drivers on my computer".



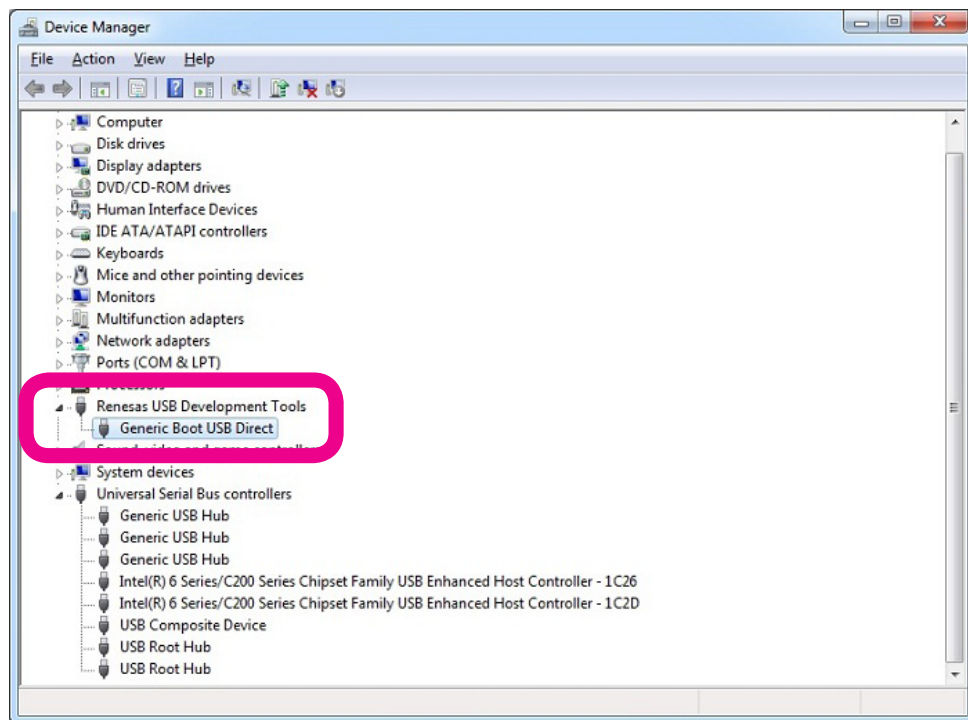
Check “Show compatible hardware”, select “Generic Boot USB Direct” inside the model, and then click “Next”.



Click “Close” when the above-mentioned screen is displayed.



If you open the device manager of the PC and Generic Boot USB Direct is displayed in the Renesas USB Development Tools as shown above, it means that driver update has been carried out normally.

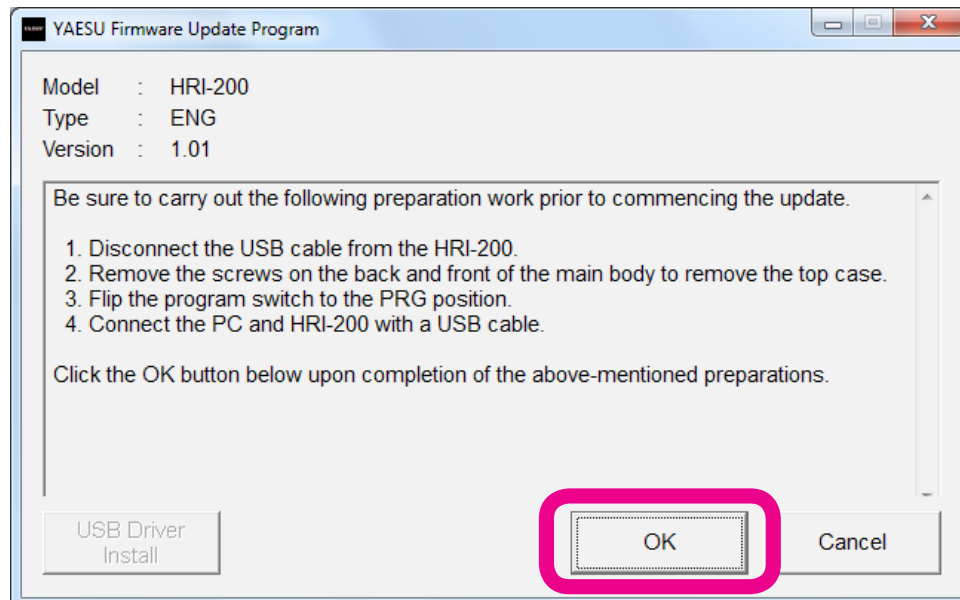


The driver update procedure ends with this.

Preparing for the Update Transfer

Press the Update button to display the screen below where the preparation procedures required before commencing the firmware update are written. Please carry out the respective tasks as follows.

When updating the firmware following the installation of the USB driver, click the "OK" button directly since the necessary preparations have already been completed.



Disconnect the USB cable

Disconnect the USB cable from the main body.

Removing the top case

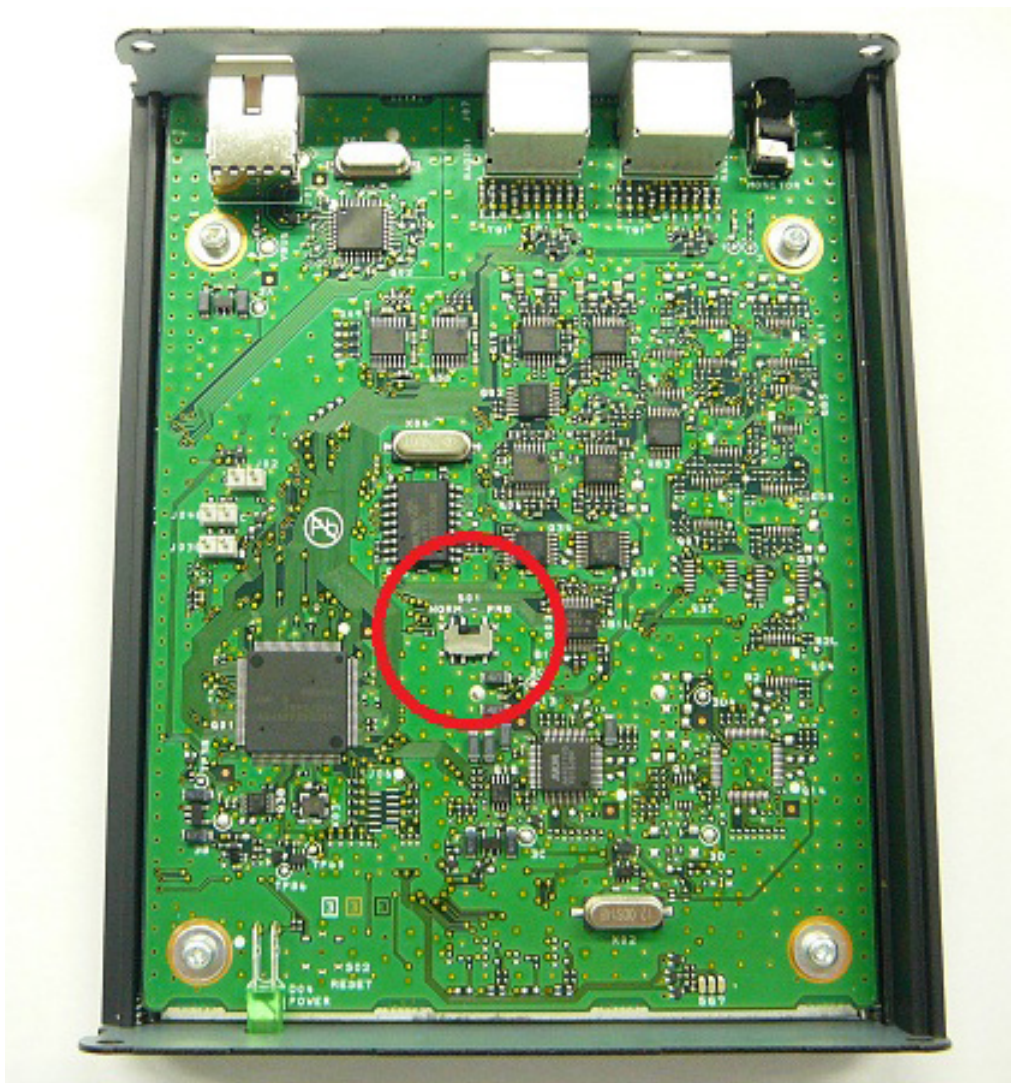
Remove the two screws enclosed by the circles at the front of the main body

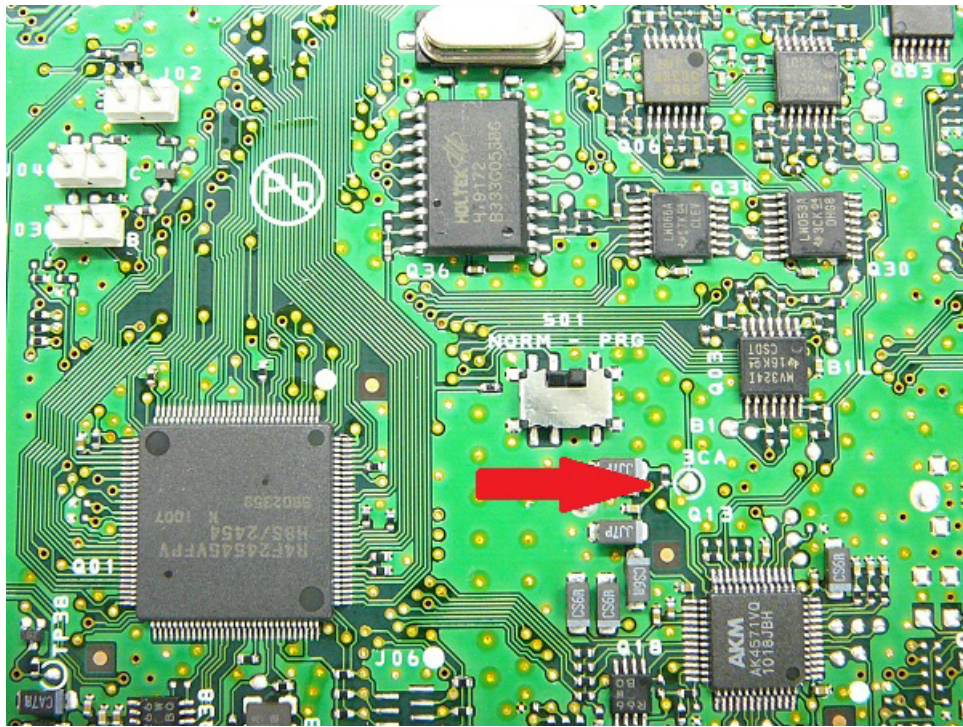


Remove the two screws enclosed by the circles at the back of the main body. Slightly loosen the two screws indicated by the arrows and remove the top case.



Move the switch to the PRG position (right side) to change to the program-writing mode.





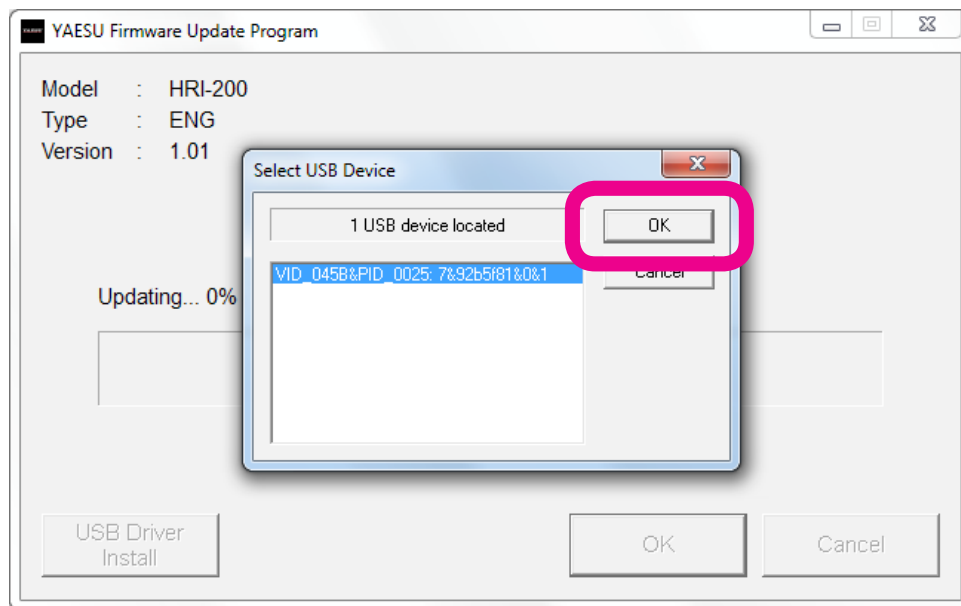
Connect the USB terminal at the back of the main body and the USB terminal on the PC with the provided USB cable.



When the above preparations are completed, click the “OK” button to advance to the next screen (Firmware Update Screen).

Firmware Update Screen

Click the “OK” button when a pop-up screen similar to the one below is displayed.

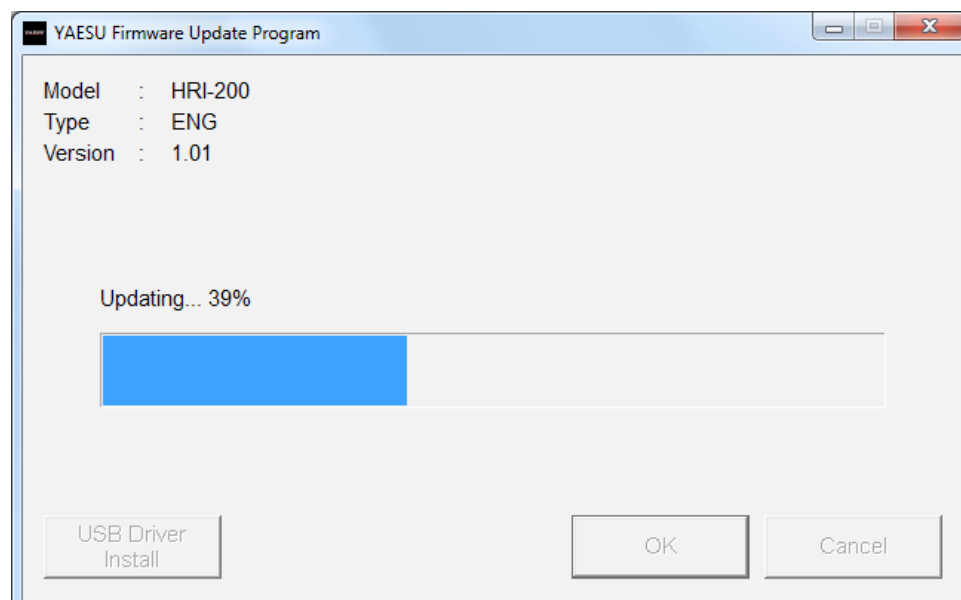


The progress bar is displayed when the updating starts. Wait for the updating to end. (The process takes about 10 seconds.)

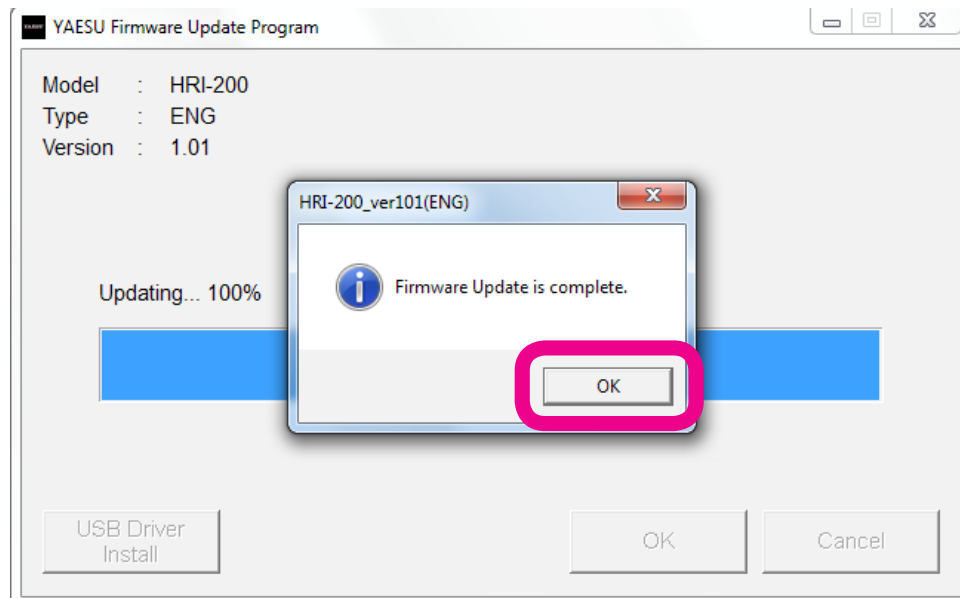
CAUTION!

Do not switch off the power supply to the PC or HRI-200 during the update.

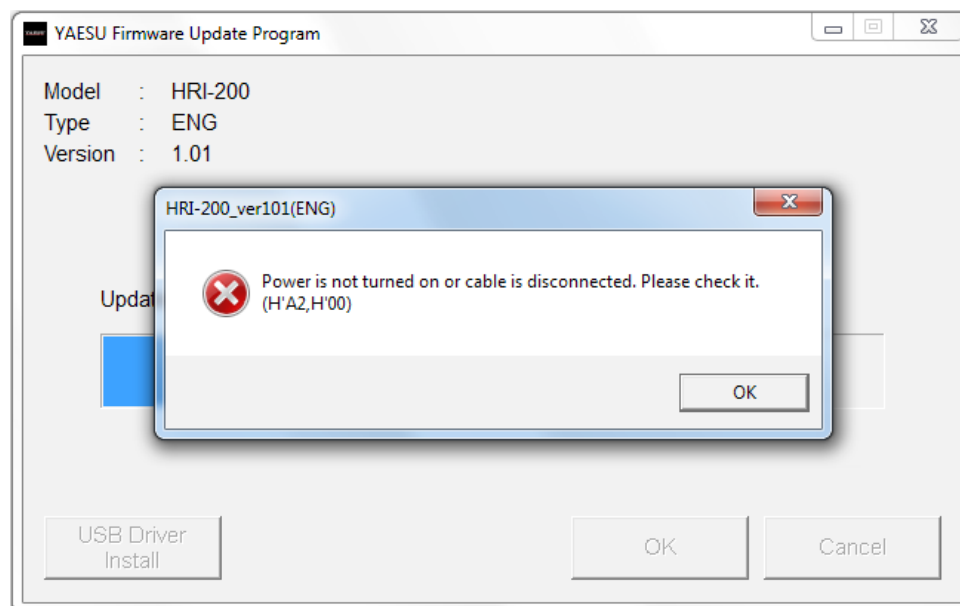
The HRI-200 may not function normally if the firmware transfer is interrupted during the upgrade.



When the update is complete and the following pop-up screen is displayed. Press the “OK” button.



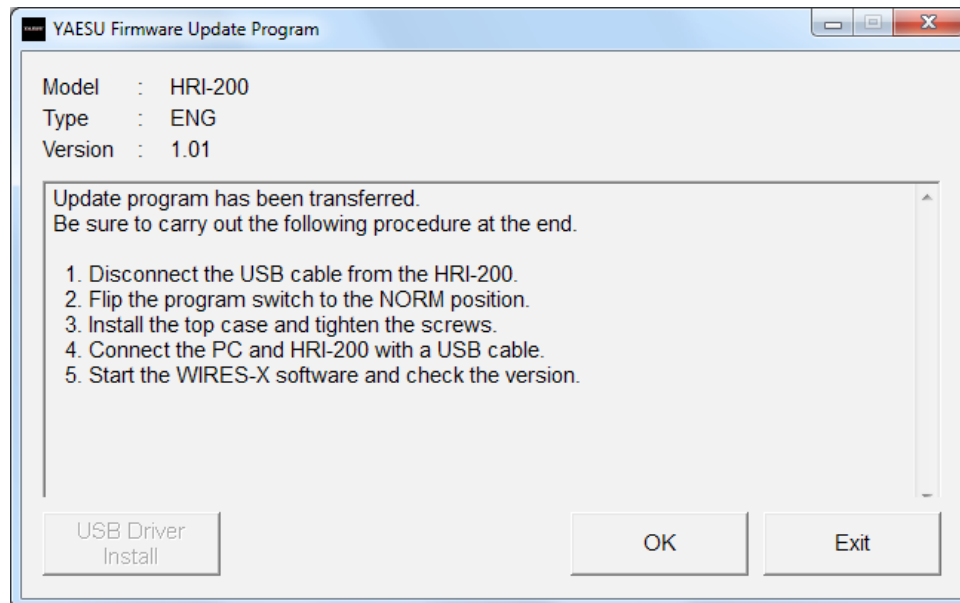
The following pop-up screen will be displayed when the updating is cancelled or when the update cannot be carried out for some reason.



When this screen is displayed, check the power and cable connections and repeat the steps from the beginning.

Final Reassembly and Operations

When the updating is completed, the screen below where the final operating procedure is written will appear. Please carry out the respective tasks as follows.

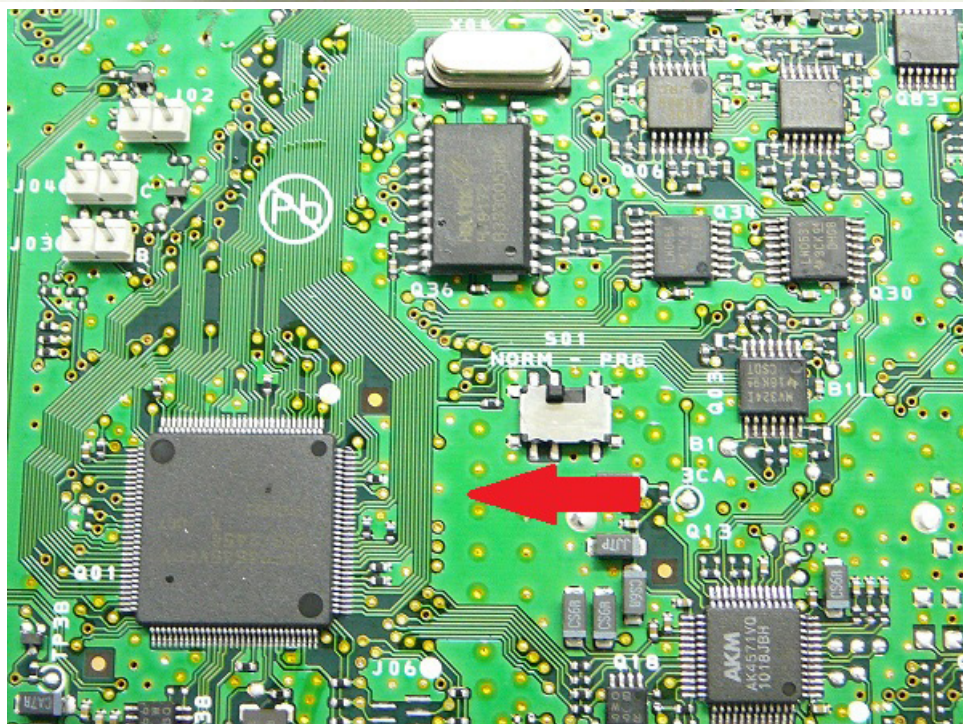
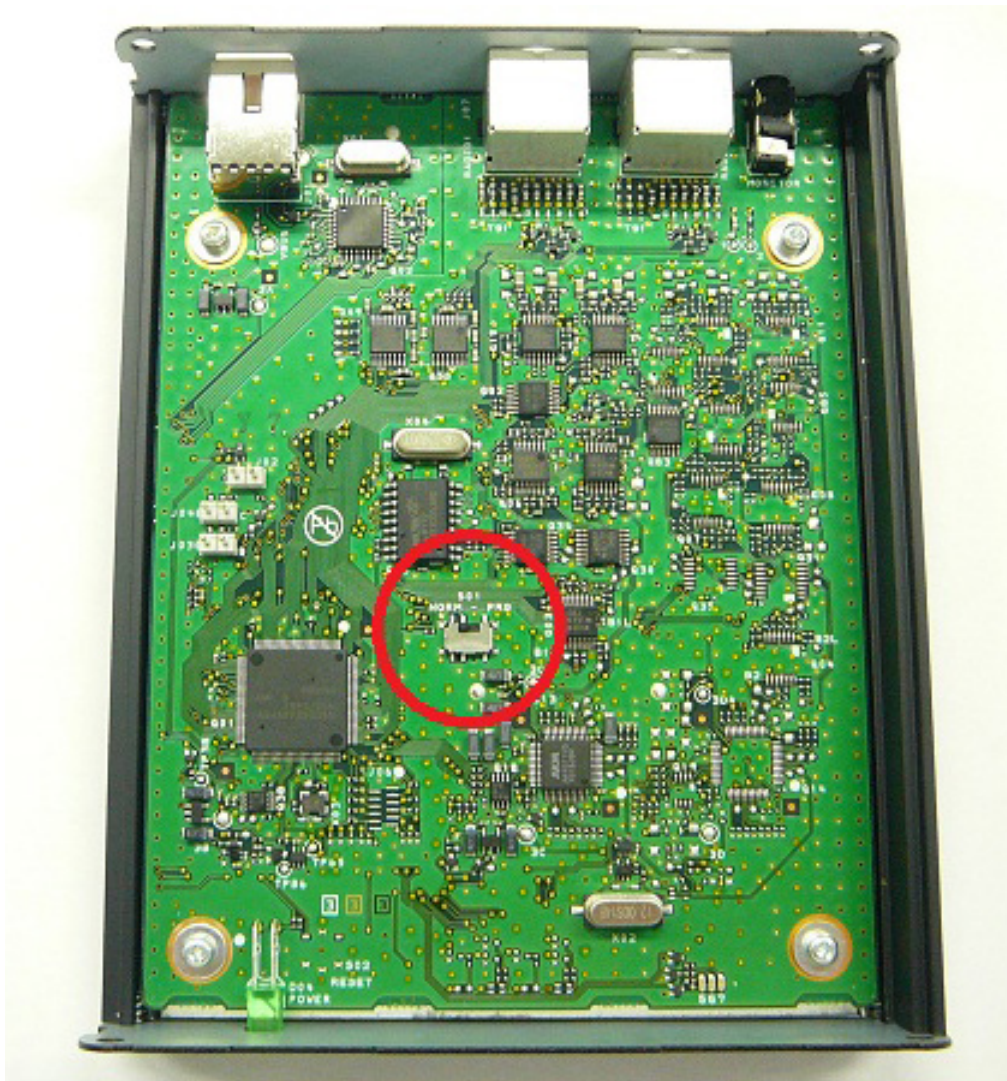


Disconnect the power cable

Disconnect the USB cable from the main body.



Move the program switch to the NORM position (left side) to change to the normal operation mode.
(The HRI-200 will not work if the switch is not returned to the operating mode.)



Installing the top case

Replace the top case onto the main body and insert the two front screws enclosed by the circles.



Insert the two screws enclosed by the circles at the back of the main body and tighten the two screws indicated by the arrows.



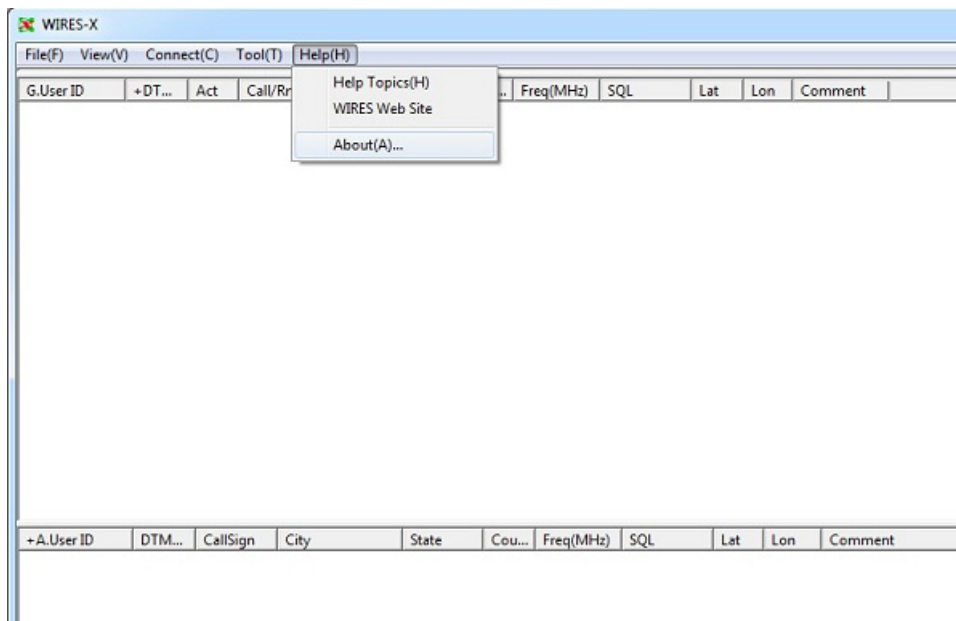
Connecting the USB cable

Connect the USB cable between the connector at the back of the main body and the USB terminal on the PC.



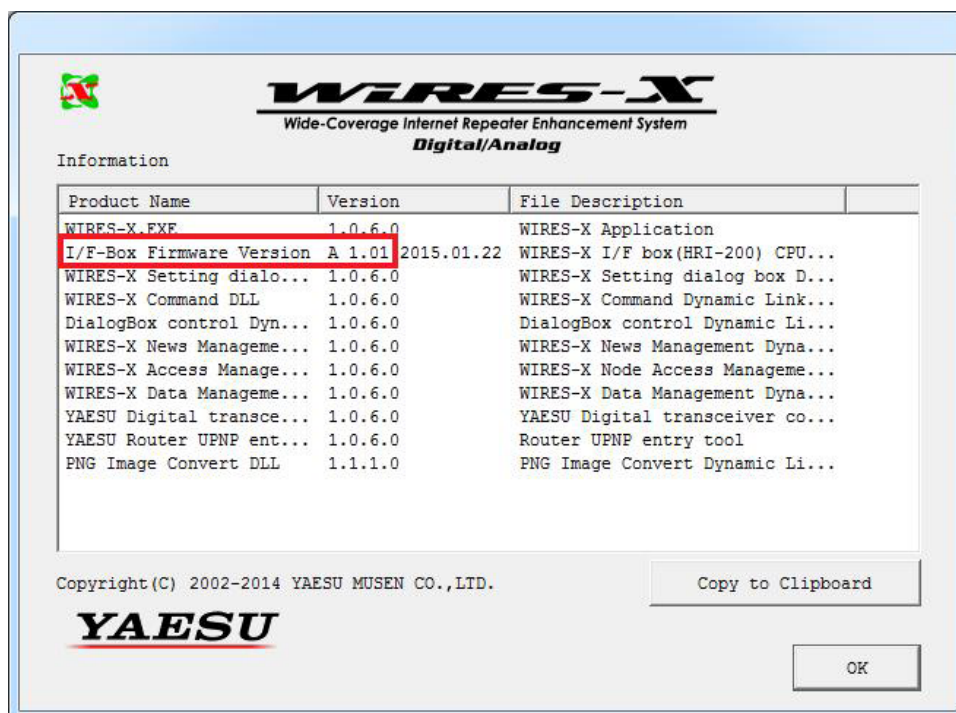
Check the Version No.

Start up the WIRES-X software and select the version information in Help as shown in the screen below.



Check the version no. enclosed in the square.

If the version no. has been updated, the update has been completed successfully.



With this, all the tasks are completed.

Press the "Exit" button on the program screen of the PC to end the program. When updating the firmware of another transceiver, pressing the "OK" button will return to the Startup screen.

Company and product names described in this manual are trademarks or registered trademarks.

Microsoft®, Windows®, Windows Vista®, Windows® 7, Windows® 8, Windows® 8.1, Windows® 10 are registered trademarks of Microsoft Corporation in the United States and other countries.

