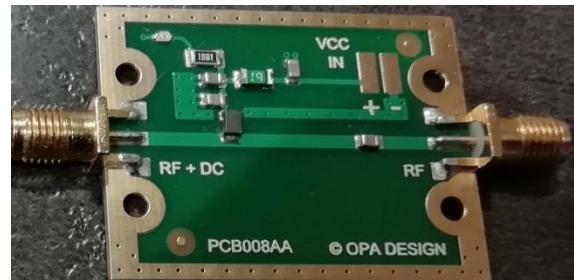


Features:

- Frequency range : 30MHz - 4000MHz
- DC current : 350mA
- Resettable fuse
- Insertion Loss: 0.4dB @ 2000MHz
- Input / Output Impedance: 50Ω
- SMA Connector

**Description:**

The BT4G covers major wireless bands from 30MHz to 4GHz.

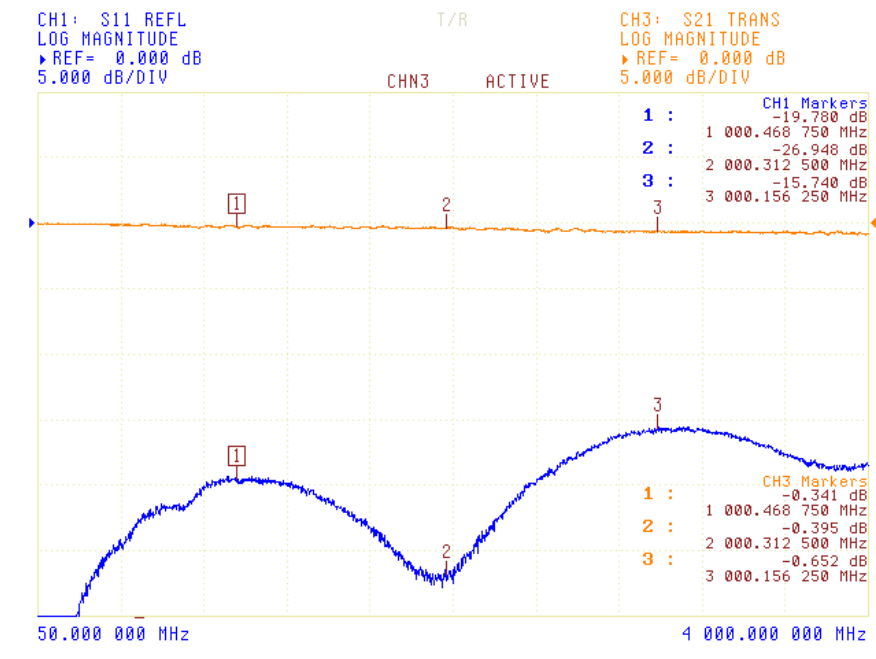
The DC input is a solder PAD terminal.

This Bias Tee is equipped with a resettable fuse (PTC) and power ON LED indicator

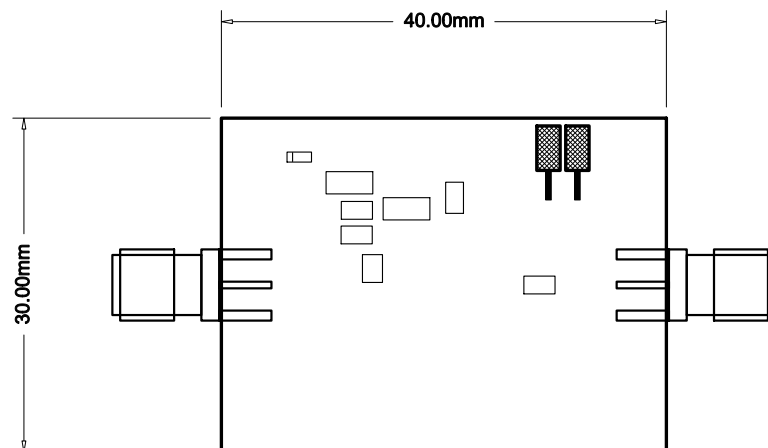
Electrical Specifications @ +25 °C, ZS = ZL = 50

Parameter	Unit	Minimum	Typical	Maximum
Frequency Range	MHz	30		4000
Insertion Loss	dB			0.9
Return Loss	dB	-15		
Maximum Input Power	dBm		+33	
Maximum Input DC voltage	V			22
Maximum Input DC current (PTC Fuse)	mA			350
Input/output impedance	Ohm		50	
RF Connectors	SMA jacks			
DC Connector	Solder PAD			

RF Performance:



Outline:



Absolute Maximum Ratings:

Parameter	Absolute Maximum
RF Input Power	+33dBm
DC Input Power	22V
Operating Temperature	-20°C to +65°C
Storage Temperature	-40°C to +85°C